

# FaceDeep 3

## Smart Face Recognition Terminal



Wi-Fi



4G



Mask  
Detection



Cloud

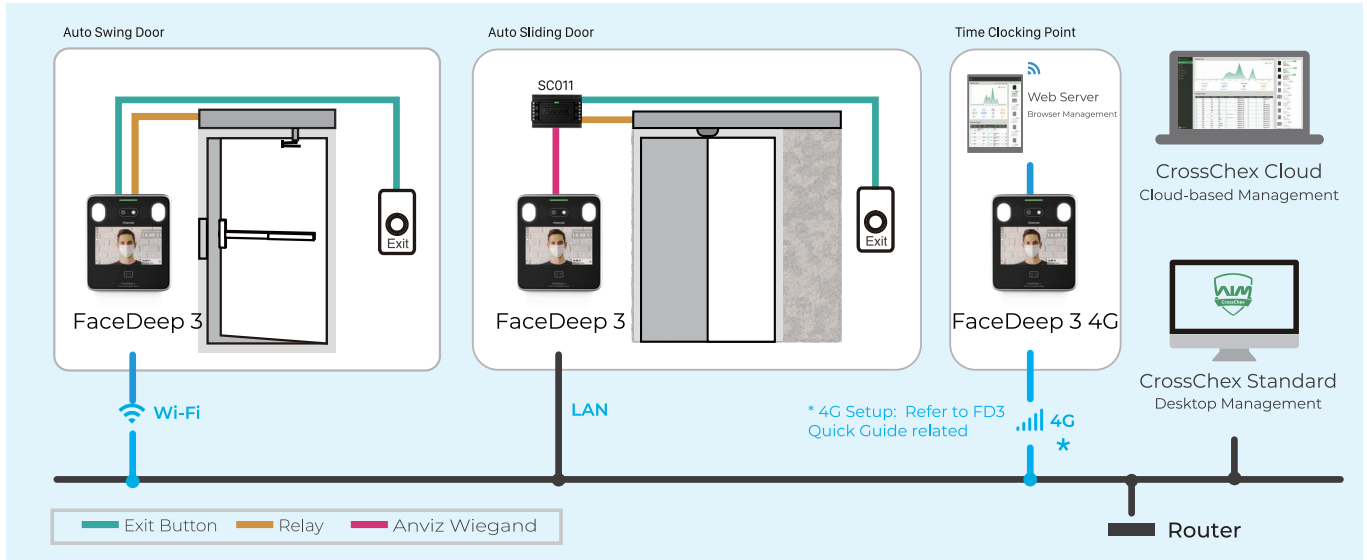


- New generation touchless solution for the people to access control on the entrance or record time attendance and simultaneously check mask-wearing without having to touch a terminal or gate.
- Built-in IR and visual cameras integrated with Anviz's unique BioNANO<sup>®</sup> algorithm to produce the best in class live face recognition performance.
- Equipped with a 5" IPS touch screen.
- Register up to 10,000 users for dynamic face authentication.
- Recognition distance up to 1.5 M with matching speed < 0.3s by 1: 10,000.
- Optional battery backup, specifically designed to work consistently in unstable power supply environments, such as construction sites, manufacturing, schools and buildings in countryside, etc.

# FaceDeep 3

## Smart Face Recognition Terminal

### System Configurations



### Key Specifications

Model		FaceDeep 3	FaceDeep 3 Pro	FaceDeep 3 4G
General	Identification mode	Face, Card, ID+Password		
	Face Recognition Distance	0.5 ~ 1.5m (19.69 ~ 59.06")		
	Face Recognition Speed	<0.3 S		
	RFID Technology	125KHz EM	13.56MHz Mifare	13.56MHz Mifare
Capacity	Max Users	6,000	6,000 (Standard), 10,000 (Customized)	6,000 (Standard), 10,000 (Customized)
	Max Cards	6,000	6,000 (Standard), 10,000 (Customized)	6,000 (Standard), 10,000 (Customized)
	Max Logs	100,000		
Hardware	CPU	Dual 1.0GHz		
	Display	5" TFT touch Screen Resolution 720*1280		
	Working Temperature	-5°C~60°C (23°F~160°F)		
	Humidity	0% to 95%		
	Power Input	DC 12V 2A		
Interface	TCP/IP		√	
	RS485		√	
	USB PEN		√	
	Wi-Fi	√	-	-
	Wi-Fi+Bluetooth	-	√	-
	4G	-	-	√
	Relay		1 Relay Out	
	Tamper Alarm		√	
	Wiegand		1 In & 1 Out	
Door Contact		√		



**Anviz Global Inc.**

41656 Christy Street Fremont, Fremont, CA, 94538

©2021 Anviz Global Inc. Anviz and identifying product names and numbers herein are registered trademarks of Anviz Global Inc. All non-Anviz brands and product names are trademarks or registered trademarks of their respective companies. Product appearance, build status and/or specifications are subject to change without notice.

Authorised Distributor

**CONQUERI**

+974 3382 7723 | sales@conqueri.com.qa